

Aligned Elements Importer

user manual

Table of Contents

1.1	Introduction	3
1.2	References	4
1.3	Disclaimer	4
2	General Overview	5
2.1	Basic Concepts	5
2.2	Conventions and constraints	5
2.3	Preparation of the source file	6
2.4	The Wizard Steps	7
2.4.1	Select the source file	7
2.4.2	Select Aligned Elements templates	8
2.4.3	Select the Document Object Type	9
2.4.4	For CSV files, define CSV settings	9
2.4.5	For Word files, define Word Parse mode	12
2.4.6	For Word files, define Word Parse settings, Table Mode	12
2.4.7	For Word files, define Word Parse settings, Search text Mode	14
2.4.8	Testing settings / define result file name	18
2.4.9	Extract results	19
2.5	Support	20
2.6	Version Information	20

1.1 Introduction

The Aligned Elements Importer extracts and converts data from Microsoft Word and csv (Comma Separated Value) files to Aligned Elements import .xml files.

Valid input file formats are:

- .csv files
- .doc files (Microsoft Word 97-2003 format)
- .docx files (Microsoft Word 2007/2010)

The generated output format is an xml file that can be imported in an Aligned Elements project (see “[Ref 1.] Aligned Elements manual, section 3.20)

1.2 References

Ref. [1] The Aligned Elements User Manual

http://aligned.ch/Support/SupportDownloads/AlignedElements_UserManual.pdf

1.3 Disclaimer

This user manual is solely intended for user guidance and does not imply any legally binding description of functionality.

2 General Overview

2.1 Basic Concepts

The Aligned Elements Importer is built as a Wizard that consists of 6 steps:

- 1) Select the source file for the import (a csv file or a Microsoft Word file).
- 2) Select the Aligned Elements templates acting as a basis for the conversion.
- 3) Select the Document Object type to which the extracted data shall be converted.
- 4) Apply the import and conversion settings.
- 5) Test the import settings OR define the result xml file name.
- 6) Perform the extraction and converting, resulting in an importable xml file

For information about Document Object Templates and Document Object Types, see Aligned Elements User Manual Section 2.1

For information on importing in Aligned Elements, see Aligned Elements User Manual Section 3.20.

2.2 Conventions and constraints

The following conventions and constraints apply to the Aligned Elements Importer.

- Only one Document object type can be extracted per session, i.e. it is not possible to extract requirements AND specifications from the source document during the same session.
- For csv files, dynamic columns are not support i.e. each line needs to contain the same number of columns.
- For csv files, all extracted data is converted to plain text.
- For csv files, only delimiter extraction is available. Fixed length extraction is not available.
- For csv files, there is no validation made during attribute assignment to ensure that the extracted data is of a valid data type for the selected attribute. This check is later made at the import of the result .xml file.
- For word files, table mode (one object per row in a table), max 10 columns can be mapped to existing attributes.

- For word files, extracted data for Rich Text attributes are displayed as raw rich text when clicking **Test Settings**.
- Only attribute data is extracted and converted from the source file. Traces, chapters, revision information etc. cannot be extracted.
- Even though IDs can be extracted from the source documents, this data will not be used during import. Each imported Document Object will obtain a new ID at import.
- The result file will have the same file name as the input file with an .xml ending. It is not possible to select the result file name.

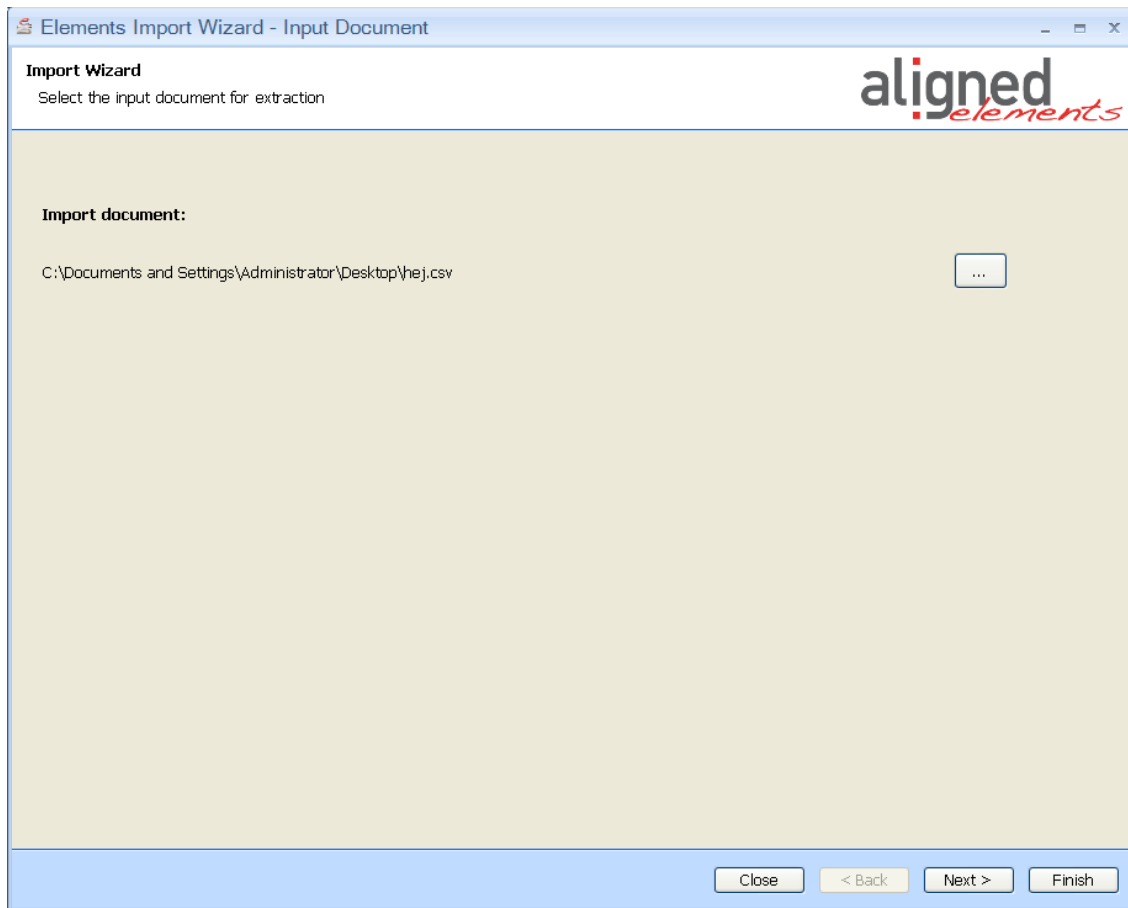
2.3 Preparation of the source file

Note that the importer is based on a specific set of rules, assuming that the source document uniformly formatted. Take some extra time and prepare your source document carefully, ensuring that it is uniformly formatted. It might even be worthwhile to make a local copy of the source document and remove and data that is not targeted for import.

2.4 The Wizard Steps

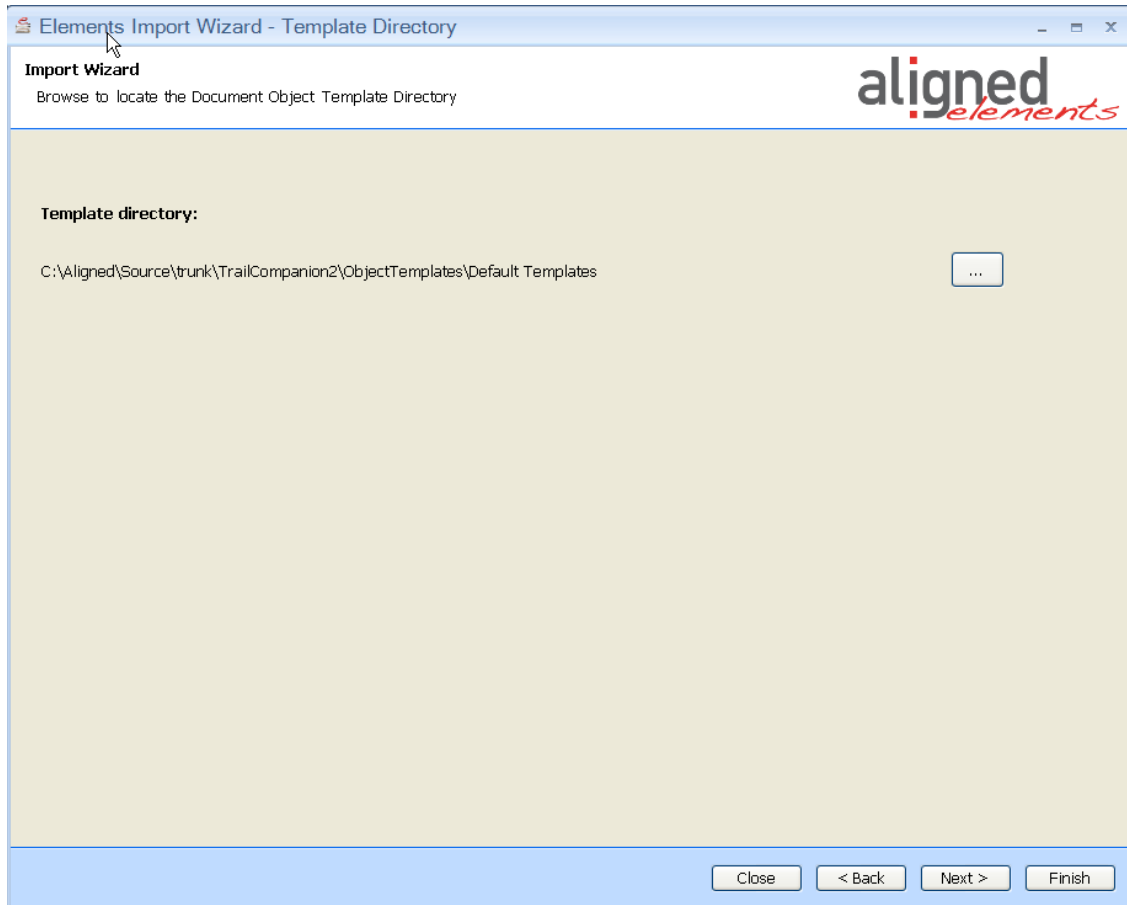
2.4.1 Select the source file

Browse to the file (csv or Word) that serves as source file for the extraction. Note that no data will be removed from the file during the extraction and conversion.

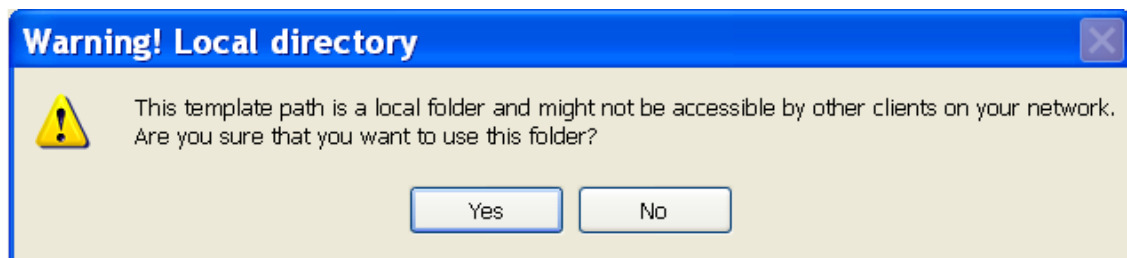


2.4.2 Select Aligned Elements templates

Select the Aligned Elements templates used in the project into which you intend to import the extracted data.



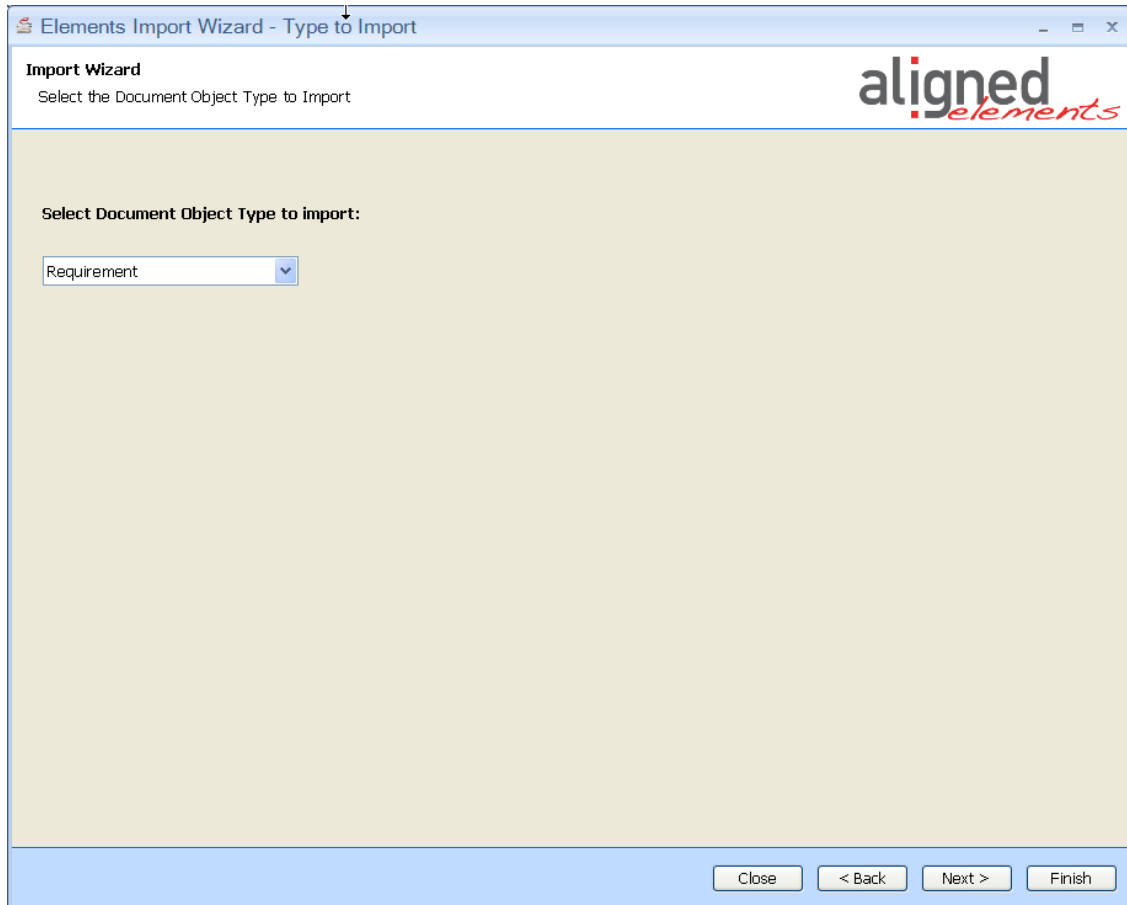
The first time a template path is selected you might get a Message box claiming:



Click Yes and continue.

2.4.3 Select the Document Object Type

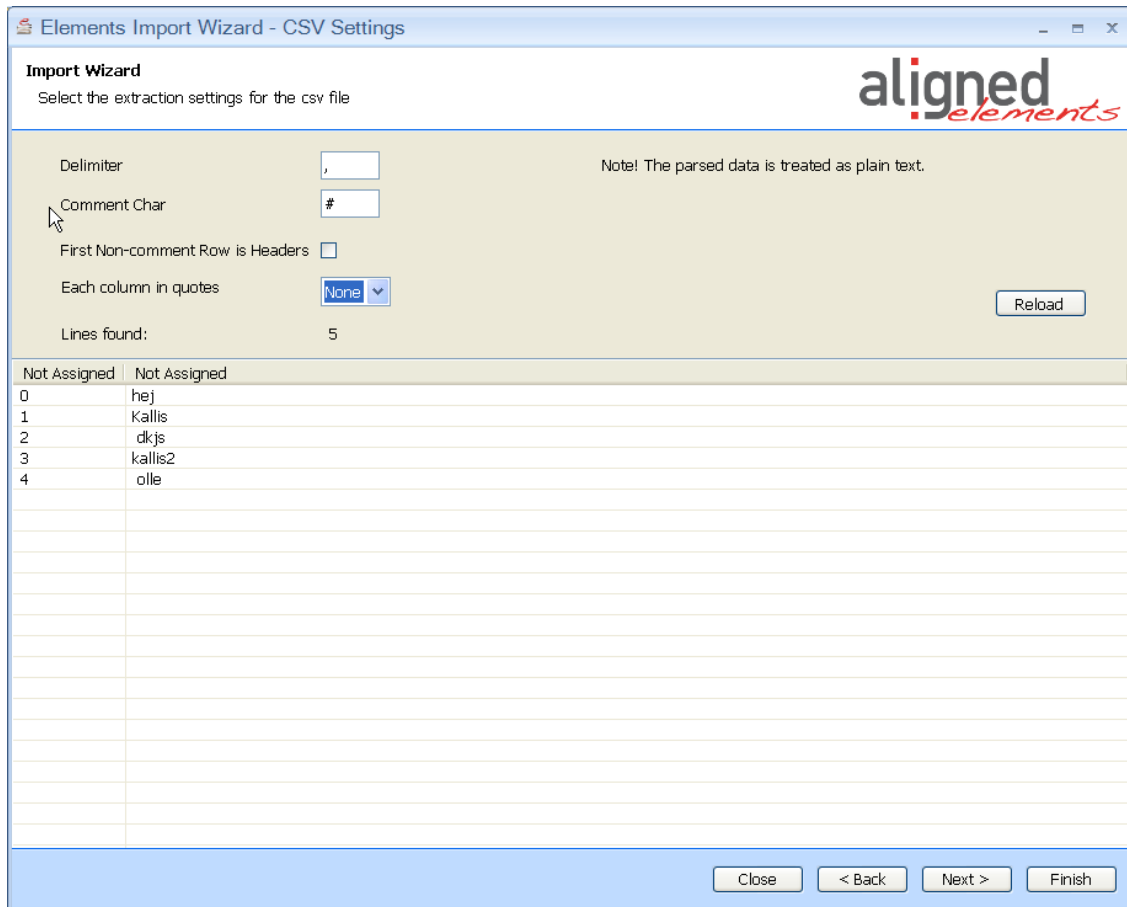
Select the Document Object type in the designated template set which is target for the conversion (such as Requirement, Specification, Test Case etc).



Note! Extraction and conversion can only be made to a single Document Object type during an import session.

2.4.4 For CSV files, define CSV settings

For csv file, it is assumed that a single line shall be transformed to a Document Object and that the data in each column is mapped to an attribute in the Document Object.



For the CSV file, the following parameters can be set:

- Delimiter character (a single character or tab sign ('\t'), default value is semi-colon)
- Comment character, where commented lines are ignored at extraction, default value is hash ('#')
- First (non-comment) line is column headers, (which are ignored at extraction), default value is false.
- Each column is in quotes, default value is "None"

When displayed, the CSV setting page has tried to parse the csv file with the default parameters. The number of found lines is displayed.

The user can apply different parameters and click the **Reload** button to reload the csv file with the new parameter settings.

In the csv grid, the context menu can be used for the following options:

1) Map column to known attribute

Right-click on a column and use the context menu to assign a column to a specific attribute. The column header now changes caption to the selected attribute name.

Note that no validation is made during attribute assignment to ensure that the extracted data is of a valid data type for the selected attribute. (i.e. there is nothing preventing you from assigning an integer attribute to a column filled with text cells.) This validation check is performed later during import of the result .xml file.

2) Delete column

Right-click on a column and use the context menu to select a column to delete.

3) Trim whitespaces or other characters from values in a specific column

Right-click on a column and use the context menu to trim white spaces or other characters from the beginning or end of all values in a column.

4) Split column

Right-click on a column and use the context menu to split a column, either using a delimiter or a fixed length.

5) Merge columns

Right-click on a column and use the context menu to merge two columns with an option of using a pad string between the two cell values..

6) Find and replace values in a column

Right-click on a column and use the context menu to find and replace values in a column. Note that the find operation is case sensitive.

7) Set default values in empty cells

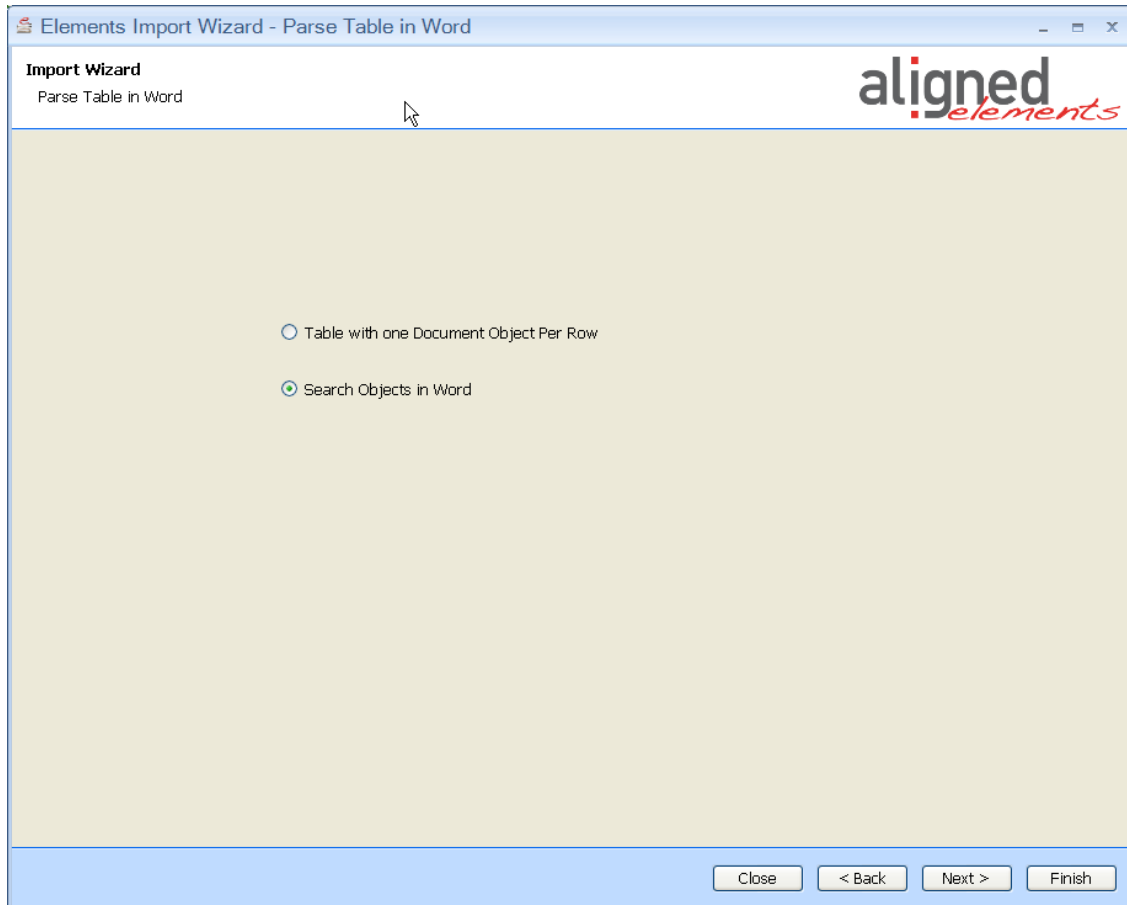
Right-click on a column and use the context menu to set a default value in all empty cells of a column.

8) Set default value in all cells of a column

Right-click on a column and use the context menu to replace all existing values in a column with a default value.

2.4.5 For Word files, define Word Parse mode

There are two main modes available for parsing Word files.



- a. Table mode, to be used for source data in tables with one attribute per column and one Document Object per row.
- b. Search text mode, to be used when the data is found in normal text sentences, paragraphs or sections.

2.4.6 For Word files, define Word Parse settings, Table Mode

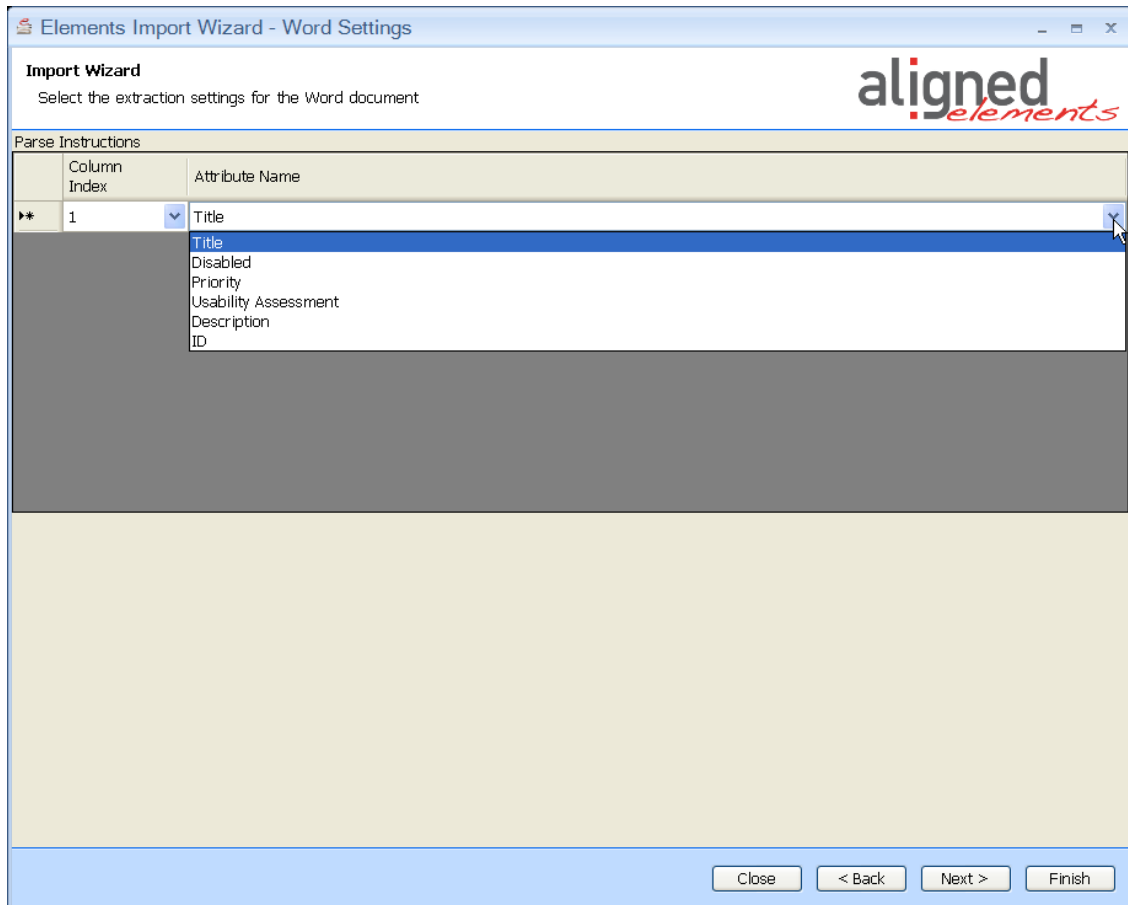


Table mode is intended for source data in tables with one attribute per column and one Document Object per row. Example:

ID	Title	Description
1	Size	The device must fit in a shirt pocket.
1.1	Color	The device color must apply to corporate guidelines.
2	Weight	The device must weigh less than 1.0 kg

The Parse instructions are used to map a column to a known attribute in the selected Document Object type. To extract the sample table above, the following parse instructions are used.

Parse Instructions		
	Column Index	Attribute Name
	1	ID
	2	Title
	3	Description
*		

The Importer will look for any tables that fit these Parse instructions, beginning from the start of the document.

2.4.7 For Word files, define Word Parse settings, Search text Mode

	Attribute Name	Case sensitive Word to Search	Extraction Range	Include Search Word	Within Chars from previous	Optional
▶	Title		Sentence	<input type="checkbox"/>	0	<input type="checkbox"/>
*	Title			<input type="checkbox"/>		<input type="checkbox"/>
	Disabled					
	Priority					
	Usability Assessment					
	Description					
	ID					

Search text mode is to be used when the data is found in normal text sentences, paragraphs or sections.

Each row in the parse instructions contains the extraction instructions for a single Document Object attribute of the selected Document Object type.

The available settings are:

Attribute Name

The Document object attribute name for which the extraction settings of the row applies. For extraction of table attributes, see detailed section further down in this document.

Case sensitive word to search

The (case sensitive) search-word the serves as bases for finding the text block to extract.

Extraction range

Defines the range (text block) to be extracted relative to the search word.

Available ranges are:

- Sentence
- SentenceAndNextSentence
- Paragraph
- ParagraphAndNextParagraph
- Section
- TableRow
- Cell
- CellAndNextRightCell

Details regarding the ranges are described below.

Consider the following example text:

Text: *"The device is important to our customers. It has to be user friendly. It must also be cheap.*

Color is not so important.

But surface texture is really important."

2.4.7.1 Sentence

The sentence in which the search word is found.

Example settings:

Attribute name	Case sensitive word to search	Range
Title	has to be	Sentence

Extraction result: *"It has to be user friendly."*

2.4.7.2 SentenceAndNextSentence

The sentence in which the search word is found as well as the following sentence.

Example settings:

Attribute name	Case sensitive word to search	Range
Title	has to be	SentenceAndNextSentence

Extraction result: *"It has to be user friendly. It must also be cheap."*

2.4.7.3 Paragraph

The paragraph in which the search word is found.

Example settings:

Attribute name	Case sensitive word to search	Range
Title	has to be	Paragraph

Extraction result: *"The device is important to our customers. It has to be user friendly. It must also be cheap."*

2.4.7.4 ParagraphAndNextParagraph

The paragraph in which the search word is found as well as the following paragraph.

Example settings:

Attribute name	Case sensitive word to search	Range
Description	has to be	ParagraphAndNextParagraph

Extraction result: *"The device is important to our customers. It has to be user friendly. It must also be cheap."*

Color is not so important."

2.4.7.5 Section

The Section in which the search word is found (analogue to paragraph).

2.4.7.6 TableRow

Only applicable for Table Attributes. When extracting data for a table attribute the TableRow range should be applied to trig the "Table Attribute column mapping" section of the Parse Instructions.

In the following example, the following test instructions shall be extracted from a word document.

ID	132	Revision	2
Title	Login test		
User stimuli		Expected behaviour	
User logs in with valid credentials.		User credentials are accepted. User is logged in	
User logs in with invalid credentials.		User is not accepted. User is notified about failed login.	

The following parse instructions are used.

Parse Instructions

	Attribute Name	Case sensitive Word to Search	Extraction Range	I S
▶	TestInstructions	▼	TableRow	▼
*		▼		▼

Table Attribute column mapping:

	Column Name	Case sensitive Word To Search
	Stimuli	▼ User stimuli
	ExpectedBehaviour	▼ Expected behaviour
*		▼

Note that the search word is ignored when the range TableRow is used.

2.4.7.7 Cell

Extracts the text in the cell in which the search word is found.

2.4.7.8 CellAndNextRightCell

Extracts the text in the cell in which the search word is found as well as the text in the next cell to the right (if such a cell exists)

Include search word (in extraction)

If checked the search word is included in the extracted data. If not checked the search word is removed from the extracted data.

Within chars from previous

The text to extract is expected to be found in the vicinity of the previously extracted attribute. The parameter defines how far the Importer shall search for the next attribute value to extract after the previously found attribute.

Optional

If checked, the Importer will, if it finds another search word in the list, skip the optional attribute.

If not checked, the Importer will search through the word document for the next search word in the Parse Instructions list regardless if it finds search words for other attributes.

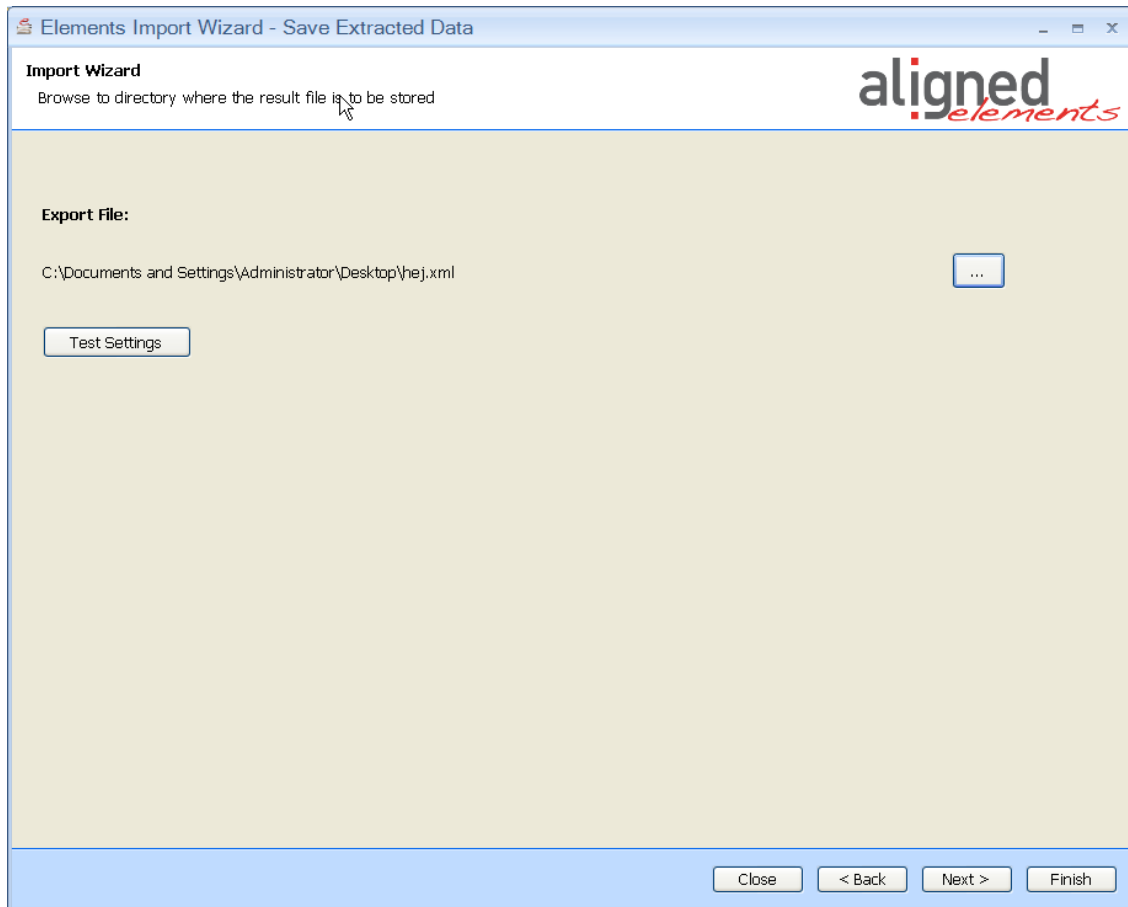
2.4.8 Testing settings / define result file name

Click the **Test Settings** button to test the parse instructions. A html document will be displayed in a browser containing an overview of the extracted data based on applying the extraction settings on the source documents.

Note that extracted data for Rich Text attributes are displayed as raw rich text.

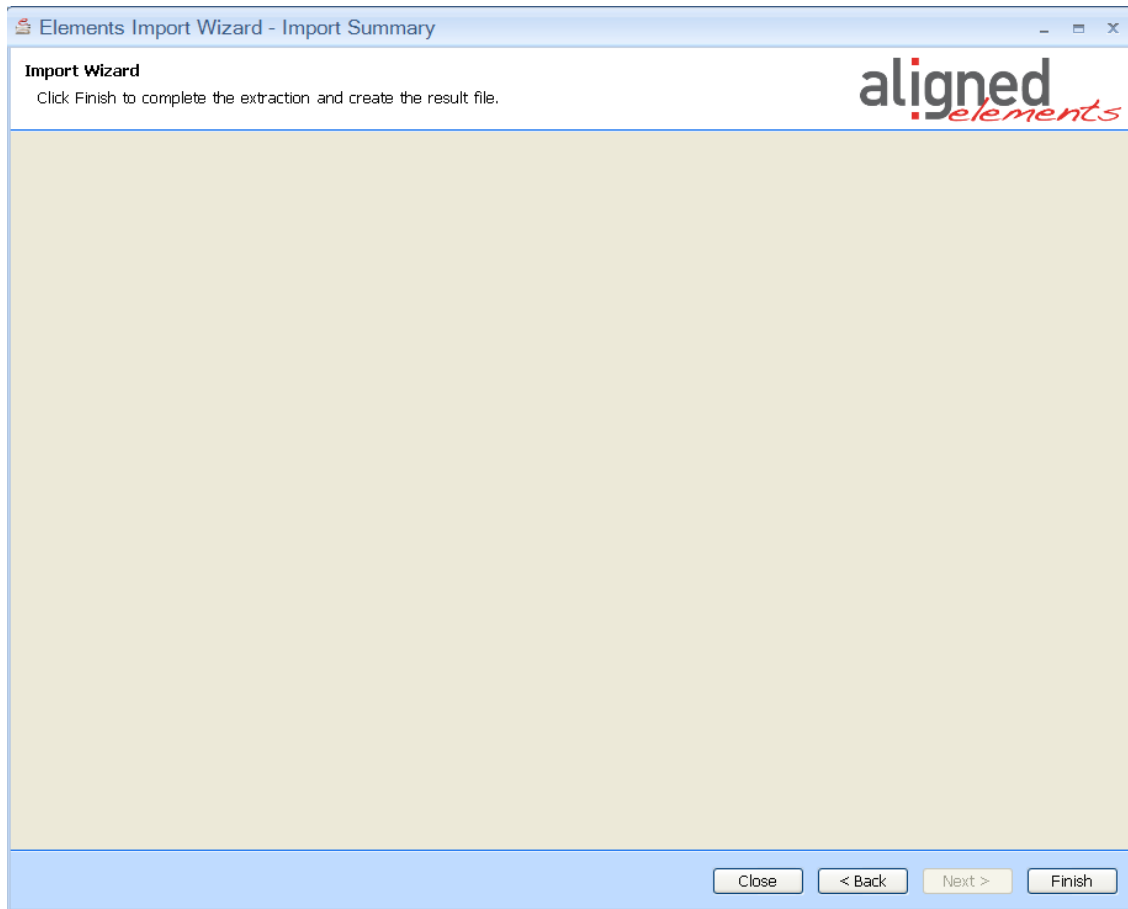
If the result is not as expected, go back and modify the settings.

If the results are as expected, browse to the target directory of the result file.



2.4.9 Extract results

Click on the Finish button to generate the result file.



2.5 Support

If you have problems with your extraction, contact us on support@aligned.ch. Please also attach:

- i. The input file
- ii. A screen shot of your settings
- iii. An explanation on what you expect from the extraction vis à vis the actual results.

2.6 Version Information

Version information about the Aligned Elements Importer is found by right clicking anywhere in the application and select **About**.